

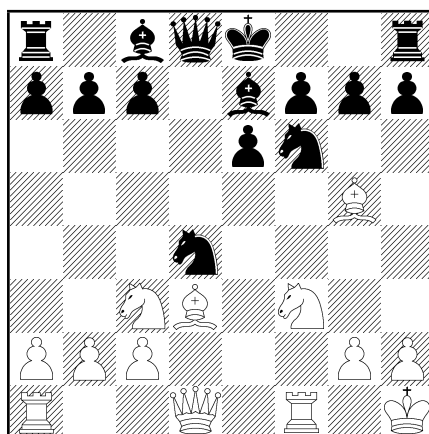
Zilbermints Gambit (4)

Database: 31-XII-2010 (4,399,153 games)

Report: 1.d4 d5 2.e4 dxe4 3.♘c3 ♘f6 4.f3 exf3 5.♘xf3 e6 6.♙g5 ♙e7 7.♙d3 ♘c6 8.O-O ♘xd4 9.♙h1 (8 games)

ECO: D00x [Blackmar-Diemer: Euwe Defence]

Generated by Scid 4.2.2, 2011.02.15



0.1 Statistics and History

0.1.1 Statistics

	Games	1:0	$\frac{1}{2}:\frac{1}{2}$	0:1	Score
All report games	8	1	4	3	37.5%

0.1.2 Oldest games

- 1: $\frac{1}{2}:\frac{1}{2}$ (38) Lannaioli Alfonsino – Shipman, 1998 ⁷
- 2: $\frac{1}{2}:\frac{1}{2}$ (38) Lannaioli Alfonsino – Schipman Joe, 1998 ⁷
- 3: 0:1 (25) Luppi – Svacek, 2000 ²
- 4: 1:0 (22) Fischer – Mertes Gerhard, 2001 ⁶
- 5: 0:1 (41) Riepe Bernhard – Koch Christian, 2001 ¹
- 6: 0:1 (22) Kuni – Schulz, 2002 ³
- 7: $\frac{1}{2}:\frac{1}{2}$ (35) Acker Horst Erwin – Schulz, 2004 ⁴
- 8: $\frac{1}{2}:\frac{1}{2}$ (41) Schuster 2488 – de Vassal 2425, 2006 ⁵

0.1.3 Newest games

- 1: $\frac{1}{2}:\frac{1}{2}$ (41) Schuster 2488 – de Vassal 2425, 2006 ⁵
- 2: $\frac{1}{2}:\frac{1}{2}$ (35) Acker Horst Erwin – Schulz, 2004 ⁴
- 3: 0:1 (22) Kuni – Schulz, 2002 ³
- 4: 1:0 (22) Fischer – Mertes Gerhard, 2001 ⁶
- 5: 0:1 (41) Riepe Bernhard – Koch Christian, 2001 ¹
- 6: 0:1 (25) Luppi – Svacek, 2000 ²
- 7: $\frac{1}{2}:\frac{1}{2}$ (38) Lannaioli Alfonsino – Shipman, 1998 ⁷
- 8: $\frac{1}{2}:\frac{1}{2}$ (38) Lannaioli Alfonsino – Schipman Joe, 1998 ⁷

0.1.4 Current popularity

Year	1800-99	1900-49	1950-69	1970-79	1980-89	1990-99	2000-09
Once every X games	—	—	—	—	—	797339	320655
Frequency in all years:	once every 549894 games						
In the 10 years to today:	once every 523050 games			(up 5% from all years)			
In the 5 years to today:	once every 0 games			(no change from all years)			
In the 1 year to today:	once every 0 games			(no change from all years)			

0.1.5 Most frequent players (White)

1:	2	1998	50%		Lannaioli Alfonsino ⁷
2:	1	2006	50%	2488	Schuster, Peter ⁵
3:	1	2000	0%		Luppi, Dario ²
4:	1	2001	100%		Fischer, Ronald ⁶
5:	1	2001	0%		Riepe Bernhard ¹
6:	1	2002	0%		Kuni, Richard ³

0.1.6 Most frequent players (Black)

1:	2	2002–2004	75%		Schulz, Hans-Juergen ^{3,4}
2:	1	2006	50%	2425	de Vassal, Thibault ⁵
3:	1	1998	50%		Shipman, Joseph ⁷
4:	1	2001	100%		Koch Christian ¹
5:	1	2000	100%		Svacek, Pavel ²
6:	1	1998	50%		Schipman Joe ⁷

0.2 Ratings and Performance

0.2.1 Average ratings and performance

White rating: 2488 (1 games); White performance: 2425 (50% vs 2425)

Black rating: 2425 (1 games); Black performance: 2488 (50% vs 2488)

0.2.2 Games with highest average rating

- $\frac{1}{2}:\frac{1}{2}$ (41) Schuster 2488 – de Vassal 2425, 2006 ⁵
- 0:1(25) Luppi – Svacek, 2000 ²
- 0:1(22) Kuni – Schulz, 2002 ³
- 0:1(41) Riepe Bernhard – Koch Christian, 2001 ¹
- $\frac{1}{2}:\frac{1}{2}$ (38) Lannaioli Alfonsino – Shipman, 1998 ⁷
- $\frac{1}{2}:\frac{1}{2}$ (35) Acker Horst Erwin – Schulz, 2004 ⁴
- $\frac{1}{2}:\frac{1}{2}$ (38) Lannaioli Alfonsino – Schipman Joe, 1998 ⁷
- 1:0(22) Fischer – Mertens Gerhard, 2001 ⁶

0.3 Result Trends

0.3.1 Result lengths and frequencies

	Score	Game length			Frequency		
		1:0	$\frac{1}{2}:\frac{1}{2}$	0:1	1:0	$\frac{1}{2}:\frac{1}{2}$	0:1
Report games	37.5%	22	38	29	12.5%	50.0%	37.5%
All games	53.9%	39	35	40	38.6%	30.5%	30.7%

0.3.2 Shortest wins (White)

1: 1:0(22) Fischer – Mertens Gerhard, 2001 ⁶

0.3.3 Shortest wins (Black)

1: 0:1(22) Kuni – Schulz, 2002 ³

2: 0:1(25) Luppi – Svacek, 2000 ²

3: 0:1(41) Riepe Bernhard – Koch Christian, 2001 ¹

0.4 Moves and Themes

0.4.1 Move orders reaching the report position

There were 3 move orders reaching this position:

1: 1.d4 d5 2.e4 dxe4 3.♘c3 ♘f6 4.f3 exf3 5.♘xf3 e6 6.♗g5 ♗e7 7.♗d3 ♘c6 8.O-O ♘xd4 9.♕h1 (4)

2: 1.d4 ♘f6 2.♘c3 d5 3.e4 dxe4 4.f3 exf3 5.♘xf3 e6 6.♗g5 ♗e7 7.♗d3 ♘c6 8.O-O ♘xd4 9.♕h1 (3)

3: 1.d4 ♘f6 2.♘c3 d5 3.e4 dxe4 4.f3 exf3 5.♘xf3 e6 6.♗d3 ♗e7 7.O-O ♘c6 8.♗g5 ♘xd4 9.♕h1 (1)

0.4.2 Moves from the report position

	Move	ECO	Frequency	Score	μElo	Perf	μYear	% Draws
1	h6		3: 37.5%	66.6%			1999	67%
2	c6		3: 37.5%	33.3%			2004	67%
3	c5		1: 12.5%	0.0%			2001	0%
4	♘c6		1: 12.5%	0.0%			2000	0%
Total			8: 100.0%	37.5%			2001	50%










0.4.3 Positional Themes

Frequency of themes in the first 20 moves of each game:

Same-side castling:	88%	White Isolated Queen Pawn:	0%
Opposite castling:	0%	Black Isolated Queen Pawn:	0%
Kingside pawn storm:	13%	White Pawn on 5/6/7th rank:	0%
Queens exchanged:	50%	Black Pawn on 2/3/4th rank:	63%
Only one side has Bishop pair:	0%	Open c/d/e file:	100%

0.4.4 Endgames

Material at the end of each game:

									
Report games	0%	0%	25%	13%	0%	0%	0%	0%	63%
All games	3%	9%	9%	25%	2%	4%	4%	4%	43%

0.5 Theory Table

1.d4 d5 2.e4 dxe4 3.♞c3 ♞f6 4.f3 exf3 5.♞xf3 e6 6.♞g5 ♞e7 7.♞d3 ♞c6 8.O-O ♞xd4									
9.♞h1: +1 =4 -3 (3/8: 38%)									
	9	10	11	12	13	14	15	16	
1	♞h1 ♞c6 ¹	♞e1 h6	♞h4 OO	♞d1 ♞d7	♞e5 ♞xe5	♞xe5 ♞g4	♞f4 e5	♞e4 f5 ²	2: 0%
2	...	♞xd4 ³ ♞xd4	♞e1 h6	♞f4 OO	♞e5 ♞g4	♞f4 ♞g5	h4 ♞h5	♞xf6 ♞xf6 ⁴	2: 25%
3	♞f4 OO	a3 ♞d5	♞xd5 cxd5	b4 ♞c6	c4 dxc4 ⁵	1: 50%
4	...	♞f4 ♞xf3	♞xf3 c6	♞ad1 ♞b6	♞g3 ♞h5	♞g4 g6	♞xg6 ♞f6	♞xf7+ ♞xf7 ⁶	1: 100%
5	♞e5 ♞d6	♞xc6 bxc6	♞f3 ♞xf4	♞xf4 ♞d6	♞f3 OO	♞ad1 ♞d5 ⁷	2: 50%

¹ **9...c5** 10. ♞xf6 ♞xf6 11. ♞e4 OO 12. ♞xc5 ♞f5
13. ♞xf5 exf5 14. c3 ♞b6 15. ♞b3 ♞e6 16. ♞fd4
♞ad8 17. ♞c2 g6 18. ♞ad1 ♞c4 19. ♞fe1 ♞fe8
20. ♞d2 ♞xe1+ 21. ♞xe1 ♞d5 22. ♞2f3 ♞g7
23. a3 ♞f8 24. ♞g5 f6 25. ♞gf3 ♞c8 26. ♞e2
♞c4 0:1(41) Riepe Bernhard – Koch Christian,
2001.

² **17. ♞c4+** ♞h8 18. ♞xe7 fxe4 19. ♞xd8 ♞xf1+
20. ♞xf1 ♞xd8 21. ♞e1 ♞c6 22. ♞e6 ♞f6
23. ♞e2 b5 24. a3 a5 25. ♞g1 a4 0:1 Luppi –
Svacek, 2000.

³ **10.a4** h6 11. ♞f4 ♞xf3 12. ♞xf3 OO 13. ♞e4
♞xe4 14. ♞xe4 f5 15. ♞e2 ♞g5 16. ♞e5 ♞f6
17. ♞c4 ♞xe5 18. ♞xe5 ♞f6 19. ♞ae1 ♞xe5
20. ♞xe5 g6 21. ♞xe6+ ♞xe6 22. ♞xe6 ♞f7 0:1
Kuni – Schulz, 2002.

⁴ **17. ♞e4** ♞d8 18. ♞af1 ♞f8 19. ♞xf6 gxf6
20. ♞xf6 ♞e7 21. ♞e2 ♞c5 22. ♞xf7+ ♞xf7
23. ♞h7+ ♞e8 24. ♞e4 ♞d1+ 25. ♞xd1 ♞e5
26. ♞f3 ♞f4 $\frac{1}{2}:\frac{1}{2}$ (35) Acker Horst Erwin –
Schulz, 2004.

⁵ **17. ♞c1** e5 18. ♞xc4 ♞e6 19. ♞xe6 ♞xe6
20. ♞xe5 f6 21. ♞f4 ♞xe1 22. ♞fxe1 ♞f7
23. ♞cd1 a5 24. ♞d6 ♞xd6 25. ♞xd6 axb4
26. axb4 ♞e7 $\frac{1}{2}:\frac{1}{2}$ (41) Schuster 2488 – de Vassal
2425, 2006.

⁶ **17. ♞e5** ♞g8 18. ♞h5+ ♞g6 19. ♞e4 ♞g7
20. ♞xf6 ♞xf6 21. ♞xf6 ♞xf6 22. ♞h4 1:0
Fischer – Mertes Gerhard, 2001.

⁷ **17. ♞e4** ♞e7 18. c4 ♞b4 19. ♞b1 e5 20. ♞g3
♞b8 21. ♞e4 g6 22. ♞e3 ♞g7 23. a3 ♞a6 24. b4
♞b7 25. ♞e4 f5 26. ♞xc6 ♞b6 $\frac{1}{2}:\frac{1}{2}$ (38)
Lannaioli Alfonsino – Shipman, 1998; $\frac{1}{2}:\frac{1}{2}$ (38)
Lannaioli Alfonsino – Schipman Joe, 1998.